

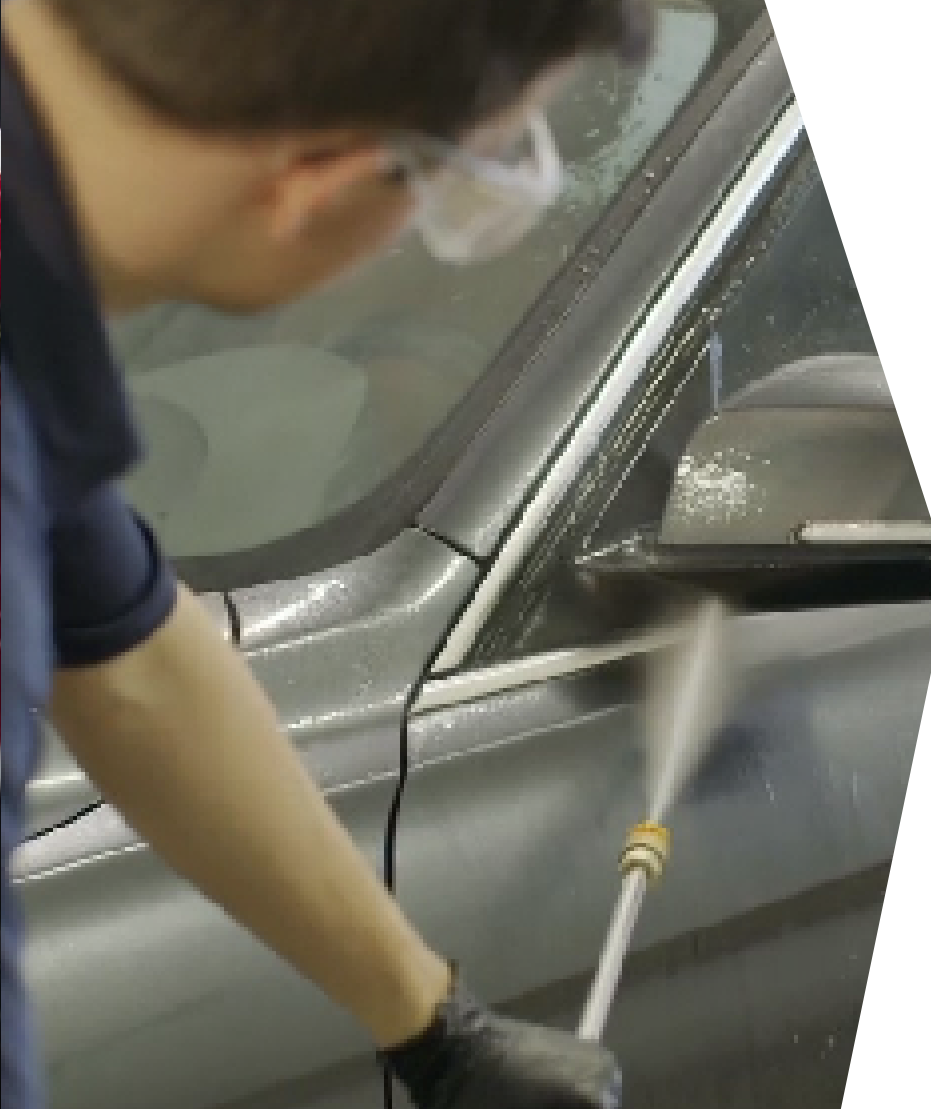


# ***AUTO VALET*** ***CATALOGUE***



***autovalet.ca***

VERSION 1.2



## ABOUT US

**WE CREATE BETTER SOLUTIONS. PRODUCTS AND SYSTEMS FOR VEHICLE DETAILING.**

Auto Valet™ was born from a passion of vehicle detailing systems and products. We are a third-generation company, proudly owned and operated in Canada, providing our full-line products and personalized training.

We are committed in providing the tools you need to help establish your detailing profit center.

## USE DETAILING TO LEVERAGE YOUR PROFITABILITY



### MAINTENANCE

Extend your vehicles' longevity



### SERVICE

Sell your detailing services



### APPEARANCE

Increase your perceived value



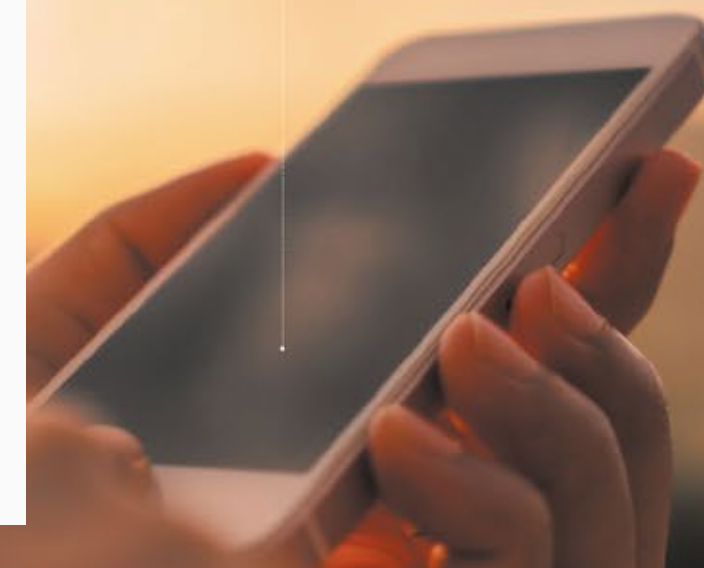
**SCAN THE QR CODE TO LEARN MORE**

## LOCATE YOUR NEAREST AUTO VALET DISTRIBUTOR

Auto Valet™ products are available through selected Auto Valet™ distributors. You can reach out to your nearest distributor directly by scanning the QR code and entering your address to obtain your nearest distributor's contact information.



**SCAN THE QR CODE TO LOCATE YOUR NEAREST DISTRIBUTOR**



# PRODUCTS

*Carpet and Upholstery Care* ..... **PAGE 6**

*Carpet, Vinyl, and Plastic Dyes* ..... **PAGE 9**

*Compounds and Polishes* ..... **PAGE 10**

*Fallout Removers* ..... **PAGE 11**

*Glass Cleaners* ..... **PAGE 11**

*Odour Control, Air Fresheners* ..... **PAGE 12**

*Paint Protectants, Waxes, and Finishes* ..... **PAGE 13**

*Rim Cleaners* ..... **PAGE 15**

*Shop Maintenance and Floor Cleaners* ..... **PAGE 16**

*Solvent Based Cleaners and Degreasers* ..... **PAGE 17**

*Solvent Based Dressings and Protectants* ..... **PAGE 19**

*Specialty Cleaners* ..... **PAGE 21**

*Vehicle Wash Soaps* ..... **PAGE 21**

*Water Based Cleaners and Degreasers* ..... **PAGE 23**

*Water Based Dressings and Protectants* ..... **PAGE 25**

# ACCESSORIES

*Air Tool Accessories* ..... **PAGE 30**

*Compounding and Polishing Accessories* ..... **PAGE 31**

*Detailing Accessories* ..... **PAGE 34**

*Dispensing Accessories* ..... **PAGE 37**

*Fallout Remover* ..... **PAGE 41**

*Microfibers* ..... **PAGE 42**

*Proportioning Systems* ..... **PAGE 43**

*Rim and Tire Accessories* ..... **PAGE 44**

*Safety and Surface Protection Accessories* ... **PAGE 45**

*Shop Maintenance and Floor Cleaners* ..... **PAGE 46**

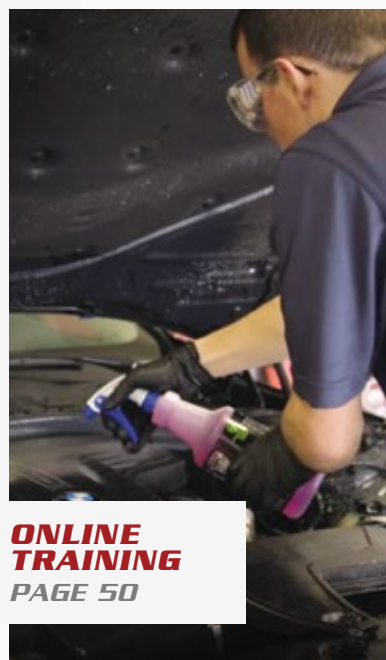
*Vehicle Wash Accessories* ..... **PAGE 47**



**EXTERIOR  
DETAILING  
BLUEPRINT**  
PAGE 27



**INTERIOR  
DETAILING  
BLUEPRINT**  
PAGE 28



**ONLINE  
TRAINING**  
PAGE 50



# PRODUCTS

High quality products are the number one ingredient to the success of your detailing operations.

From the rims to roof, Auto Valet™ has got you covered. We offer safer, more reliable, and more profitable products. By constantly looking for ways to improve the quality and usability of our full-line products, we strive to offer the best performance to you and your employees.

Check out the resource of Auto Valet™ products to revolutionize your detailing operations. Your perfect ingredient for success!



**RELIABLE**  
**PURPLE  
POWER**  
WATER BASED CLEANERS  
AND DEGREASERS  
PAGE 23



**POPULAR**  
**BEAD BUILDER**  
PAINT PROTECTANTS,  
WAXES, AND FINISHES  
PAGE 14



**SAFETY CONSCIOUS**  
**BRILLIANT**  
RIM CLEANERS  
PAGE 15







## PRODUCT SYMBOLS

				
<b>BODY SHOP SAFE</b>	<b>NOT BODY SHOP SAFE</b>	<b>V.O.C. COMPLIANT</b>	<b>EV/HYBRID FRIENDLY</b>	<b>ENVIRONMENTALLY FRIENDLY</b>

## CONTAINER ICONS

				
<b>AEROSOL</b>	<b>BOTTLE</b>	<b>JUG</b>	<b>CUBE</b>	<b>PAIL</b>
	946 ML / 1 US QUART	3.78 L / 1 US GAL	18.9 L / 5 US GAL	18.9 L / 5 US GAL

			
<b>KEG</b>	<b>DRUM</b>	<b>TOTE</b>	<b>WORKPLACE LABEL</b>
56.8 L / 15 US GAL	208.2 L / 55 US GAL	1003 L / 265 US GAL	

Bottles and triggers are sold separate from the workplace labels. Photos show use-case scenarios of bottles, triggers and workplace labels together.

200



### PREZYME ENZYME CLEANER

PREZYME removes organic soils, stains, and the malodors connected with them. Blood, urine, vomit, fats, grease, oil, food particles, coffee, and milk are consumed by PREZYME. An excellent option for use on carpets and upholstery, before shampooing or deep cleaning.



A20012 - JUG - 3.78 L / 1 US GAL    A20014 - CUBE - 18.9 L / 5 US GAL    A20018 - DRUM - 208.2 L / 55 US GAL  
BA200 - WORKPLACE LABEL



202



### COUNTERACT SALT STAIN REMOVER

COUNTERACT effectively dissolves stubborn, unsightly salt deposits and encrustations on carpets. COUNTERACT also works on vehicle exteriors to remove calcium deposits caused by concrete condensation in underground parking bays.



A20212 - JUG - 3.78 L / 1 US GAL    A20214 - CUBE - 18.9 L / 5 US GAL    A20218 - DRUM - 208.2 L / 55 US GAL  
BA202 - WORKPLACE LABEL



210



### X-TRACT CARPET EXTRACTION DETERGENT

As a hot water extraction detergent, X-TRACT effectively breaks down dirt, grime, and grease in all types of carpet and fabrics. X-TRACT removes most stains, leaves a clean fresh aroma, and eliminates residue which prevents re-soiling.



A21012 - JUG - 3.78 L / 1 US GAL    A21014 - CUBE - 18.9 L / 5 US GAL  
A21018 - DRUM - 208.2 L / 55 US GAL



211

### BIO PLUS

FOAMING, FABRIC SPOT AND STAIN REMOVER

BIO PLUS provides a two-phase approach when cleaning and deodorizing carpet and fabrics. The unique chemical system instantly deodorizes and dissolves embedded grime and organic matter. It is then followed by bio-enzymatic activity which breaks down organic residue and eliminates stains and odours at the source. BIO PLUS removes unpleasant substances such as milk, wine, vomit, urine, and feces.



A21102 - AEROSOL - 510 C / 18 OZ



216

### DEEP CLEAN

INTERIOR HARD SURFACE AND LEATHER CLEANER

DEEP CLEAN is a ready-to-use cleaner which cleanses pores of leather while softening and moisturizing. DEEP CLEAN effortlessly cleans all interior hard and leather surfaces, removing dirt, grime, and stains. With a PH balanced formula, DEEP CLEAN works safely on all leather types.



A21612 - JUG - 3.78 L / 1 US GAL A21614 - CUBE - 18.9 L / 5 US GAL A21618 - DRUM - 208.2 L / 55 US GAL  
BA216 - WORKPLACE LABEL



212

### CRYSTAL FOAM

UPHOLSTERY SHAMPOO

CRYSTAL FOAM is a unique foaming shampoo designed for use on carpets and upholstery using either: a rotary scrub, dry foam, or bonnet buff method. CRYSTAL FOAM develops a rich lather, which lifts and encapsulates soils and prevents re-depositing. The residual foam dries to a brittle crystal, which vacuums out easily. Soft on velours. Pleasantly scented. Easy to use by hand.



A21202 - AEROSOL (REGULAR) - 539 G / 19 OZ A21202 - AEROSOL (INVERTED) - 539 G / 19 OZ  
A21212 - JUG - 3.78 L / 1 US GAL A21214 - CUBE - 18.9 L / 5 US GAL



BA212 - WORKPLACE LABEL

218

### SOFT TOUCH

LEATHER CONDITIONER

As a deep penetrating lotion, SOFT TOUCH moisturizes, protects, and preserves smooth leather. SOFT TOUCH is simple to apply, imparts a fresh leather fragrance to all areas conditioned, and buffs to a lustrous sheen bringing out the distinctiveness of leather.



A21810 - BOTTLE - 946 ML / 1 US QUART



214

### FABRIC SHIELD

FABRIC PROTECTOR

FABRIC SHIELD is a nano emulsion-based protectant designed for use on natural and synthetic fabrics. FABRIC SHIELD does not block fabric breathability or destroy the fabric feel; providing superior repellency and stain resistance while leaving no residual odour.



A21412 - JUG - 3.78 L / 1 US GAL A21414 - CUBE - 18.9 L / 5 US GAL  
BA214 - WORKPLACE LABEL



# CARPET, VINYL, AND PLASTIC DYES

Carpet, Vinyl, and Plastic Dyes are available in various colours, matched to O.E.M. colouring standards. Use to restore automotive carpet, vinyl and plastic. Specially formulated to leave the carpet and vinyl soft and flexible, with a permanent coating that will not crack, split, peel, or rub off. Due to the variations of printing conditions, colours shown may vary from actual dye colour.



<b>DOESKIN</b> R25302 AEROSOL - 319 G / 11.25 OZ	<b>KHAKI</b> R25502 AEROSOL - 319 G / 11.25 OZ	<b>LIGHT GREY</b> R27002 AEROSOL - 319 G / 11.25 OZ
<b>DOVE GREY</b> R26902 AEROSOL - 319 G / 11.25 OZ	<b>GREY</b> R27302 AEROSOL - 319 G / 11.25 OZ	<b>SILVER METALLIC</b> R27102 AEROSOL - 319 G / 11.25 OZ
<b>CARBON GREY</b> R27402 AEROSOL - 319 G / 11.25 OZ	<b>DARK GREY METALLIC</b> R27602 AEROSOL - 319 G / 11.25 OZ	<b>DARK GREY</b> R27502 AEROSOL - 319 G / 11.25 OZ
<b>CHARCOAL GREY</b> R27802 AEROSOL - 319 G / 11.25 OZ	<b>BLACK</b> R28002 AEROSOL - 319 G / 11.25 OZ	



COMING SOON

The NEW & IMPROVED Range of FINIS Compounds & Polishes for enhanced results!



814



## SUMMIT SUPER COMPOUND

STAGE 1

SUMMIT SUPER COMPOUND removes deep scratches, overspray, and heavy oxidation - a minimum of 1000 grit sanding scratch. Incorporated Diminishing Abrasive Technology (DAT) leaves a mirrored, high gloss finish on either fresh or old paint; paint must be cured before compounding. When applying SUMMIT SUPER COMPOUND, use as a two-step compound, followed by SUMMIT SUPER POLISH (product code: 815). For best results apply using a compounding pad, with a cut level appropriate to paint condition requirements.



A81410 - BOTTLE - 946 ML / 1 US QUART



815



## SUMMIT SUPER POLISH

STAGE 2

As an advanced O.E.M polish, SUMMIT SUPER POLISH eliminates paint surface defects by permanently removing: fine flattening marks, slight paint imperfections, hazes, and holograms on all types of paintwork. SUMMIT SUPER POLISH uses Diminishing Abrasive Technology (DAT), leaving a mirrored glossy finish, unmatched by conventional polishes. For best results apply using a light cut or polishing pad.



A81510 - BOTTLE - 946 ML / 1 US QUART



820



## 50/50 ONE STEP

POLISH AND WAX

50/50 ONE STEP polish is professionally formulated as a one-step polish and wax for traditional and clear coat finishes, as well as repainted vehicles. 50/50 ONE STEP polishes and finishes in one simple application, leaving a long-lasting protective shine. 50/50 ONE STEP removes swirl marks, slight surface imperfections, light oxidation, and brings back colour of faded and dull finishes.



A82010 - BOTTLE - 946 ML / 1 US QUART



306

**KNOCK OUT**  
LIQUID FALLOUT REMOVER

KNOCK OUT effectively removes industrial fallout such as rail dust and smokestack ash. When used with care, KNOCK OUT dissolves the minute iron particles which are embedded in painted surfaces. This product is a surface cleaner that may be used in the process of automotive refinishing. KNOCK OUT is formulated with mild organic acids, which are safe on glass and paint.



A30612 - JUG - 3.78 L / 1 US GAL  
A30618 - DRUM - 208.2 L / 55 US GAL  
A30614 - CUBE - 18.9 L / 5 US GAL  
BA306 - WORKPLACE LABEL



342

**IMAGE**  
STREAK FREE

IMAGE is the ultimate cleaner for glass, windows, mirrors, chrome, porcelain, ceramic tiles, Arborite, Formica and most plastics. IMAGE is safe, economical, easy to use, and effectively removes dirt, grime, fingerprints, smudges, grease and smoke film. The finished surface repels dust and dirt, producing long-lasting results.



A34202 - AEROSOL - 539 G / 19 OZ  
A34218 - DRUM - 208.2 L / 55 US GAL  
A34212 - JUG - 3.78 L / 1 US GAL  
BA342 - WORKPLACE LABEL  
A34214 - CUBE - 18.9 L / 5 US GAL



344

**PLUS 40**  
CONCENTRATED GLASS CLEANER

PLUS 40 is a super concentrated window and mirror cleaner. At 40 parts water to 1 part PLUS 40, it quickly and effectively removes dirt, grime, fingerprints, smudges, grease and smoke film. In its diluted form PLUS 40 is safe and economical.



A34414 - CUBE - 18.9 L / 5 US GAL  
BA344 - WORKPLACE LABEL



**ODOUR CONTROL,  
AIR FRESHENERS**

Deodorizers are highly concentrated liquids that are used to eliminate odours at the source, and leave no residue or stain, when used as directed. Ideal for enclosed areas and are non-flammable. Deodorizers can also be used in hot or cold-water extractor and shampoo machines.



**561**  
**CHERRY**  
**DEODORIZER**

**JUG** **WORKPLACE LABEL**  
A56112 - JUG - 3.78 L / 1 US GAL  
BA561 - WORKPLACE LABEL



**562**  
**GREEN**  
**APPLE**  
**DEODORIZER**

**JUG** **WORKPLACE LABEL**  
A56212 - JUG - 3.78 L / 1 US GAL  
BA562 - WORKPLACE LABEL



**563**  
**SPRING**  
**FRESH**  
**DEODORIZER**

**JUG** **WORKPLACE LABEL**  
A56312 - JUG - 3.78 L / 1 US GAL  
BA563 - WORKPLACE LABEL



**564**  
**NEW CAR**  
**DEODORIZER**

**JUG** **WORKPLACE LABEL**  
A56412 - JUG - 3.78 L / 1 US GAL  
BA564 - WORKPLACE LABEL



**567**  
**PIÑA COLADA**  
**DEODORIZER**

**JUG** **WORKPLACE LABEL**  
A56712 - JUG - 3.78 L / 1 US GAL  
BA567 - WORKPLACE LABEL



821

**ROYAL GLAZE**  
CLEANER AND WAX

ROYAL GLAZE is ideal for quickly preparing new and used cars for display or delivery, by gently cleaning the vehicle's painted surfaces and removing spider-web scratches. ROYAL GLAZE is easily applied and removed by either hand or machine; buffs clean and produces a non-greasy deep gloss finish.



A82110 - BOTTLE - 946 ML / 1 US QUART



827

**PARADE**  
FINAL TOUCHES

PARADE is designed for maintaining the perfect finish on display or final delivery vehicles, removing: fingerprints, smudges, and surface dust while enhancing lustre. Safe on all paint finishes, chrome, vinyl trim and glass. PARADE is ideal for removing residue after buffing and is recommended as a lubricant for compounding, polishing, clay bars, or nano buff wash mitts.



A82712 - JUG - 3.78 L / 1 US GAL  
A82714 - CUBE - 18.9 L / 5 US GAL  
A82718 - DRUM - 208.2 L / 55 US GAL  
BA827 - WORKPLACE LABEL



823

**TROPICAL GOLD**  
FINISHING WAX

TROPICAL GOLD combines the well-proven attributes of natural carnauba wax with modern technology to produce a superb deep-shine hard-shell finish. TROPICAL GOLD glides on and off effortlessly by hand but can be used with an orbital buffer as well. Enjoy months of beautifying protection from harmful sun rays, harsh weather and detergents.



A82310 - BOTTLE - 946 ML / 1 US QUART



832

**BEAD BUILDER**  
SPRAY WAX AND CERAMIC COATING ENHANCER

As a spray wax and ceramic coating enhancer, BEAD BUILDER effortlessly delivers durable lustre, gloss, and sleekness to exterior vehicle surfaces. BEAD BUILDER is dual-acting by freely removing dust, smudges, and fingerprints; and promotes cleaner surfaces, as bugs and dirt cannot adhere to the treated surfaces as easy. Reinforced hydrophobic properties; boosts water beading capabilities. Intensifies paint protection. No hazing or discolouration of trim. Desirable watermelon fragrance.



A83212 - JUG - 3.78 L / 1 US GAL  
A83214 - CUBE - 18.9 L / 5 US GAL  
A83218 - DRUM - 208.2 L / 55 US GAL  
BA832 - WORKPLACE LABEL



825

**SPEED BEAD**  
DRYING AGENT

SPEED BEAD is designed as an out-performing drying agent for tunnel washes and self-serve bays. This concentrated product achieves excellent water bead up, finishing the vehicle surface with a protective microfilm and superior gloss.



A82514 - CUBE - 18.9 L / 5 US GAL  
A82518 - DRUM - 208.2 L / 55 US GAL



302

**FLAME**  
ACID RIM CLEANER

FLAME is an aggressive acid-based wheel cleaner, eliminating the need for brushing or scrubbing. FLAME easily penetrates and lifts off brake dust and other road film deposits. When rinsed, the wheel is left clean, bright and streak-free. Not recommended for use on certain alloys.



A30212 - JUG - 3.78 L / 1 US GAL  
A30218 - DRUM - 208.2 L / 55 US GAL  
A30214 - CUBE - 18.9 L / 5 US GAL  
BA302 - WORKPLACE LABEL



303

**RIM CLEANER**  
OEM APPROVED

RIM CLEANER is an effective, powerful rim cleaner that eliminates the need for brushing or scrubbing vehicle rims. RIM CLEANER easily penetrates and lifts off the brake dust and other road film deposits. When rinsed, the rim is clean and brightened.



A30314 - CUBE - 18.9 L / 5 US GAL  
A30318 - DRUM - 208.2 L / 55 US GAL  
A30316 - KEG - 56.8 L / 15 US GAL  
BA303 - WORKPLACE LABEL



300

**BRILLIANT**  
SAFETY FIRST

BRILLIANT is a non-corrosive, quick-acting rim cleaner. BRILLIANT eliminates the need to brush or scrub the wheel. When rinsed, the wheel rim is left clean, bright and streak-free. BRILLIANT has a low odour and is biodegradable making it our safest rim cleaner.



A30012 - JUG - 3.78 L / 1 US GAL  
A30018 - DRUM - 208.2 L / 55 US GAL  
A30014 - CUBE - 18.9 L / 5 US GAL  
BA300 - WORKPLACE LABEL



130

**CONC-KLEEN**  
POWDERED FLOOR DEGREASER

CONC-KLEEN is a concentrated cleaner and degreaser compound designed for asphalt and concrete floors. Intended for removing grease, oil, and undercoating from garages and factories; CONC-KLEEN is ideal when maintaining shop floors to ensure efficient working conditions, safety, and appearance. Safe on rubber, vinyl, and stainless steel. Biodegradable.



A13015 - PAIL - 18.9 L / 5 US GAL  
A13016 - KEG - 56.8 L / 15 US GAL  
A13018 - DRUM - 208.2 L / 55 US GAL



170

**SUPER-O**  
CITRUS SOLVENT DEGREASER

SUPER-O is an effective solvent degreaser, designed to be used on all areas of the vehicle body. SUPER-O removes grease, tar, oil, gum, wax and cosmoline from a range of surfaces. Ideal for cleaning and polishing stainless steel, and quickly removing large areas of decal adhesive from painted surfaces.



A17012 - JUG - 3.78 L / 1 US GAL    A17014 - CUBE - 18.9 L / 5 US GAL  
BA170 - WORKPLACE LABEL



180

**SAP REMOVER**  
SAP AND ORGANIC RESIN REMOVER

SAP REMOVER is a quick-drying formula which penetrates, lifts, and dissolves sap and organic resins. If any sap is detected on a vehicle's paint surface, it should be removed promptly with SAP REMOVER to ensure no etching or discolouring occurs to the paint's clear coat.



A18010 - BOTTLE - 946 ML / 1 US QUART



173

**SUPER SOL**  
QUICK DRY SOLVENT DEGREASER

SUPER SOL is a quick-drying VOC Compliant solvent blend that effectively dissolves adhesives. Perfect for easy removal of labels from glass, metal, painted surfaces, and plastic. SUPER SOL also excels at tackling tar, grease, and oily soil deposits on carpets, upholstery, and exterior paint. Whether you need to remove decal adhesive from vehicle painted surfaces or clean up tough messes, SUPER SOL is your go-to flash dry solvent solution.



A17312 - JUG - 3.78 L / 1 US GAL    A17315 - PAIL - 18.9 L / 5 US GAL  
A17318 - DRUM - 208.2 L / 55 US GAL    BA173 - WORKPLACE LABEL



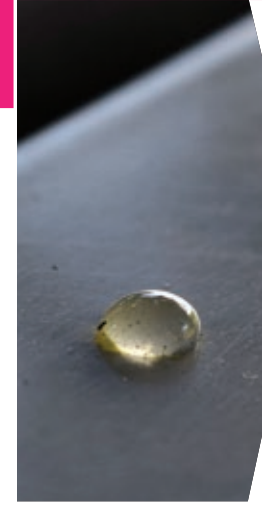
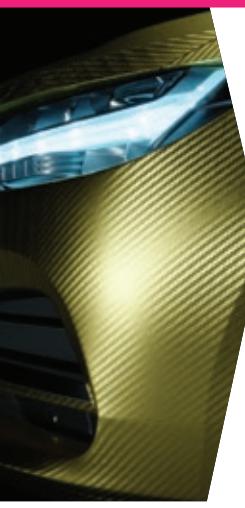
177

**OUST**  
SOLVENT DEGREASER

OUST is a fast-acting solvent-based cleaner and degreaser, designed to quickly dissolve and emulsify tough substances like road tar, rust-proofing, and adhesives. Perfect for fast and easy removal from exterior surfaces, OUST ensures a clean finish without the use of harsh chlorinated solvents, making it a safer option for all users. Additionally, OUST is VOC Compliant, ensuring it meets Canadian environmental standards. Its effective formula allows for quick rinsing, leaving surfaces spotless with minimal effort.



A17712 - JUG - 3.78 L / 1 US GAL    A17714 - CUBE - 18.9 L / 5 US GAL  
A17716 - KEG - 56.8 L / 15 US GAL    A17718 - DRUM - 208.2 L / 55 US GAL  
BA177 - WORKPLACE LABEL



160

## RECOVER

SOLVENT AND SILICONE DRESSING

RECOVER is a top-tier, solvent-based liquid silicone dressing designed specifically for professional detailers. Ideal for use on vehicle vinyl tops, rubber tires, and trim. RECOVER offers exceptional water resistance, ensuring that rubber and vinyl surfaces stay clean and glossy for an extended period.



A16012 - JUG - 3.78 L / 1 US GAL  
A16018 - DRUM - 208.2 L / 55 US GAL  
A16014 - CUBE - 18.9 L / 5 US GAL  
BA160 - WORKPLACE LABEL



165

## KWIK SHINE

ADVANCED FORMULA  
VINYL AND PLASTIC DRESSING

KWIK SHINE provides a water-resistant, high gloss shine to areas such as bumpers, dashboards, vinyl tops, rubber hoses, and door gaskets. Ideal for hard-to-reach areas such as air conditioning vents and gear shift boots. Performs equally well for interior and exterior applications. No wiping required. Watermelon scented. KWIK SHINE is a clear coating that does not contain pigments and is designed to be applied over any other coating.



A16502 - AEROSOL - 340 G / 12 OZ



164

## TOP HAT

SOLVENT AND SILICONE DRESSING

TOP HAT is an exceptional, VOC-compliant silicone/solvent dressing with a refreshing blossoming cherry fragrance. Easy to apply, it levels swiftly and provides a durable, glossy finish. Ideal for use on tires, moldings, bumpers, vinyl trim, and vinyl roofs. Apply TOP HAT with an applicator to ensure a level high gloss look. Its long-lasting, water-repellent formula makes it perfect for weather conditions in North America.



A16414 - CUBE - 18.9 L / 5 US GAL  
A16418 - DRUM - 208.2 L / 55 US GAL  
BA164 - WORKPLACE LABEL



847

## GATOR SKIN

ADVANCED FORMULA  
AUTO BODY RUBBERIZED UNDERCOATING SPRAY

GATOR SKIN is a quick-crack-sealer and patch that does not crack or peel with age. Specially formulated to stop leaks and seal out moisture, GATOR SKIN prevents rust and corrosion. GATOR SKIN dries to the touch in one hour to a jet-black colour, and can then be painted with solvent-based enamel. As a flexible coating, GATOR SKIN also deadens sound and reduces noise.



A84702 - AEROSOL - 454 G / 16 OZ



167

## REWARD

SOLVENT AND NON-SILICONE DRESSING

REWARD is a VOC-compliant, solvent-based dressing that is safe for body shop use, thanks to its wax and silicone free formula. This versatile product is designed for application on rubber tires, vinyl roofs, and trim. REWARD effectively repels water from surfaces, delivering a long-lasting, clean, and glossy finish that enhances your vehicle's appearance.



A16714 - CUBE - 18.9 L / 5 US GAL  
BA167 - WORKPLACE LABEL



308

**VANISH**  
NON-FUMING ACID CLEANER

VANISH is an easy-to-use, non-fuming acid cleaner. VANISH works to remove unsightly soap deposits in tunnel washes on brick, block, ceramics, metal and painted walls; on floors, fibreglass, Lexan, glass and stainless steel. When used as directed, VANISH easily removes splashes of hardened concrete from automotive paint surfaces without damaging the paint.



A30814 - CUBE - 18.9 L / 5 US GAL BA308 - WORKPLACE LABEL



115

**AUTO GLEAM**  
HARD WATER FORMULA

Derived from premium, luxurious ingredients, AUTO GLEAM is formulated to transcend in performance and conquer the disadvantages of hard water. The lavish nature of AUTO GLEAM eclipses ordinary soaps, by effectively binding minerals; creating intensified foaming, cleaning, rinsing, and drying capabilities. Incorporated drying agents enhance the ability of water beading, for a simple dry. Highly concentrated. Designed for use in automatic friction vehicle washes; also performs well in manual friction vehicle washes.



A11512 - JUG - 3.78 L / 1 US GAL A11514 - CUBE - 18.9 L / 5 US GAL  
A11518 - DRUM - 208.2 L / 55 US GAL BA110 - WORKPLACE LABEL



110

**AUTO WASH**  
AUTO WASH AND WAX

As a one-step wash-and-wax, AUTO WASH penetrates and removes stubborn dirt, while producing a lustrous sheen. The extensive capabilities of AUTO WASH offers a straightforward, environmentally friendly, effective vehicle wash method. Drying and wax agents enhance ability of water beading; for a simple dry and provisional wax. Certified biodegradable according to OECD-301 testing. Designed for use in both automatic and manual friction vehicle washes.



A11012 - JUG - 3.78 L / 1 US GAL A11014 - CUBE - 18.9 L / 5 US GAL A11016 - KEG - 56.8 L / 15 US GAL  
A11018 - DRUM - 208.2 L / 55 US GAL BA110 - WORKPLACE LABEL



116

**COBRA**  
TOUCHLESS CAR WASH SOAP

COBRA is formulated for touchless vehicle washing, as it penetrates, lifts and allows for resistant road films, oil, grease and clay soil to float away quickly and consistently. COBRA attacks bug residue and carbon deposits on painted vehicle surfaces as well as on aluminium, painted wood and metal. Apply COBRA using high or low pressure, and rinse with high pressure (500 psi or greater), to leave the surface protected and glossy.



A11614 - CUBE - 18.9 L / 5 US GAL A11618 - DRUM - 208.2 L / 55 US GAL



113

**CRAZY SUDZ**  
RADICAL POLYMER CHEMISTRY

Formulated using advanced polymer chemistry, CRAZY SUDZ is a resilient, foamy vehicle wash shampoo. The strength of CRAZY SUDZ exhibits exceptional washing capabilities, showcased in both hard and soft water. Established with a high viscosity, CRAZY SUDZ is ideal to manually pour and apply. Incorporated drying agents allow water to bead, for a simple dry. Pleasant blossoming cherry fragrance. Designed for use in manual friction vehicle washes.



A11314 - CUBE - 18.9 L / 5 US GAL A11318 - DRUM - 208.2 L / 55 US GAL  
BA113 - WORKPLACE LABEL



119

**T-11**  
CONCENTRATED LIQUID TRUCK AND TRAILER WASH

T-11 is a concentrated liquid truck and trailer wash formulated to remove exhaust deposits, road film, and bug residue from painted vehicle surfaces in one application, with minimal to no brushing. T-11 is free from butyl, caustics, acids, or solvents. Designed with synthetic, biodegradable detergents that rinse fully and eliminate streaking. Ideal for contract truck washing services, truck leasing dealers, and truck washes.



A11914 - CUBE - 18.9 L / 5 US GAL A11918 - DRUM - 208.2 L / 55 US GAL  
A11919 - TOTE - 1003 L / 265 US GAL BA119 - WORKPLACE LABEL



328

## GREASE TERMINATOR

CLEANER AND DEGREASER

Developed to be economical, GREASE TERMINATOR is a proficient, concentrated cleaner and degreaser. The versatile nature of GREASE TERMINATOR is demonstrated in both interior and exterior applications. Optimal to eliminate grease and grime, remove bugs, clean tires, shampoo the engine bay, and use on door jambs. Dilute to a strength appropriate for the application. Simple to apply with a sprayer and to remove with water.



A32814 - CUBE - 18.9 L / 5 US GAL  
BA328 - WORKPLACE LABEL  
A32818 - DRUM - 208.2 L / 55 US GAL



339

## D'LIMOKLEEN PLUS

CITRUS CLEANER AND DEGREASER

D'LIMOKLEEN PLUS is a versatile cleaner and degreaser that is biodegradable, non-corrosive, and non-toxic. D'LIMOKLEEN PLUS effectively dissolves, emulsifies, and suspends oil, grease, fat, rust stains, carbon, and dirt from most surfaces. Dilute D'LIMOKLEEN PLUS with water to achieve a muscled water-based engine degreaser, whitewall tire cleaner, vinyl, and concrete floor degreaser. Leaves the surface clean and emits a pleasant citrus odour.



A33912 - JUG - 3.78 L / 1 US GAL  
A33918 - DRUM - 208.2 L / 55 US GAL  
A33914 - CUBE - 18.9 L / 5 US GAL  
BA339 - WORKPLACE LABEL



330

## PURPLE POWER®

HEAVY DUTY CLEANER AND DEGREASER

PURPLE POWER® is an effective and economical multi-purpose concentrate designed to remove oil, grease, rust stains, carbon, and dirt from engines, door jambs, tires, carpets, upholstery, and concrete floors. Dilute PURPLE POWER® with water to achieve the required solution strength. Free-rinsing, controlled foam. PURPLE POWER® is certified readily biodegradable according to independent OECD -301 testing.



A33012 - JUG - 3.78 L / 1 US GAL  
A33018 - DRUM - 208.2 L / 55 US GAL  
BA330 - WORKPLACE LABEL  
A33014 - CUBE - 18.9 L / 5 US GAL  
A33019 - TOTE - 1003 L / 265 US GAL  
A33016 - KEG - 56.8 L / 15 US GAL



360

## ULTRA KLEEN

READY TO USE CLEANER AND DEGREASER

ULTRA KLEEN is a powerful, ready-to-use spray cleaner which easily penetrates and lifts grease, oil, wax, clay soils, nicotine, and protein type soils. ULTRA KLEEN is ideal for dried bug residue, whitewalls, plastic and vinyl surfaces, and seatbelts. ULTRA KLEEN may be diluted up to 1 part to 40 parts water creating an effective cleaner for lighter applications.



A36012 - JUG - 3.78 L / 1 US GAL  
A36018 - DRUM - 208.2 L / 55 US GAL  
A36014 - CUBE - 18.9 L / 5 US GAL  
BA360 - WORKPLACE LABEL



332

## TRANSPORT

MULTI-PURPOSE CLEANER AND DEGREASER

TRANSPORT is a surface cleaner that may be used in the process of automotive refinishing. TRANSPORT excels in many application requirements including transport truck wash, new vehicle transit coating remover, and an overall vehicle cleaner and degreaser. TRANSPORT is safe on glass and aluminium, is non-flammable, foamy, and biodegradable.



A33214 - CUBE - 18.9 L / 5 US GAL  
BA332 - WORKPLACE LABEL  
A33218 - DRUM - 208.2 L / 55 US GAL



156

## AQUA SHIELD

WATER AND SILICONE DRESSING

Formulated using advanced polymer technology, AQUA SHIELD effortlessly restores rubber, vinyl, and plastic trim by strengthening, sealing, and shielding. The performance of AQUA SHIELD is parallel with its qualities; as a water-based dressing, AQUA SHIELD is environmentally friendly and V.O.C. compliant. Designed to provide a high gloss appearance. Non-flammable, ideal for safe use on the vehicle engine compartment. Desirable fresh fruity fragrance.



A15612 - JUG - 3.78 L / 1 US GAL  
 A15618 - DRUM - 208.2 L / 55 US GAL  
 A15614 - CUBE - 18.9 L / 5 US GAL  
 BA156 - WORKPLACE LABEL



163

## ULTRA SHIELD

WATER AND SILICONE DRESSING

ULTRA SHIELD contains a mixture of polymers that restore, seal, and protect rubber, vinyl, leather and wood; restoring their glow. ULTRA SHIELD is nonflammable, ideal for dressing engine compartments. ULTRA SHIELD emits a pleasant blossoming cherry fragrance. Yields a mid-gloss finish to tires and rubber.



A16312 - JUG - 3.78 L / 1 US GAL  
 A16318 - DRUM - 208.2 L / 55 US GAL  
 A16314 - CUBE - 18.9 L / 5 US GAL  
 BA163 - WORKPLACE LABEL



161

## ENCHANTER ULTIMATE

WATER AND SILICONE DRESSING

ENCHANTER ULTIMATE contains a unique blend of polymers that restore, seal, and protect rubber, vinyl, and leather. ENCHANTER ULTIMATE is a water-based dressing which achieves high gloss parallel to solvent dressings without containing volatile organic compounds. ENCHANTER ULTIMATE is nonflammable, ideal for safely dressing engine compartments. Yields a hi-gloss, wet finished appearance to tires and rubber.



A16112 - JUG - 3.78 L / 1 US GAL  
 A16118 - DRUM - 208.2 L / 55 US GAL  
 A16114 - CUBE - 18.9 L / 5 US GAL  
 BA161 - WORKPLACE LABEL



166

## SAFETY SHINE

NON-SILICONE DRESSING

SAFETY SHINE is designed to allow body shops to safely use a water-based dressing, as SAFETY SHINE contains no silicone, petroleum solvents, or waxes. SAFETY SHINE is a self-levelling, non-flammable, body shop safe dressing which works well on tires and vinyl applications.



A16612 - JUG - 3.78 L / 1 US GAL  
 A16618 - DRUM - 208.2 L / 55 US GAL  
 A16614 - CUBE - 18.9 L / 5 US GAL  
 BA166 - WORKPLACE LABEL



# EXTERIOR DETAILING BLUEPRINT

SCAN THE QR CODE TO VIEW THE FULL DETAILING BLUEPRINT



- 1 TAR AND ORGANIC MATERIAL REMOVAL**  
AREAS: exterior surfaces  
PRODUCTS: SUPER-O, SUPER SOL, OUST
- 2 CONCRETE OVERSPRAY REMOVAL**  
AREAS: exterior surfaces  
PRODUCTS: VANISH
- 3 RIM CLEAN**  
AREAS: wheel rims  
PRODUCTS: BRILLIANT, FLAME, RIM CLEANER
- 4 EXHAUST TIP TREATMENT**  
AREAS: tailpipes  
PRODUCTS: BRILLIANT, FLAME, RIM CLEANER
- 5 DEGREASE EXTERIOR**  
AREAS: engine compartment, gas cap, rocker panels, wheel wells, tires, door jambs  
PRODUCTS: SUPER-O, SUPER SOL, OUST, PURPLE POWER, TRANSPORT, D'LIMOKLEEN PLUS, GREASE TERMINATOR, ULTRA KLEEN
- 6 BUG REMOVAL**  
AREAS: grille, front bumper, hood, headlamps, license plate, front trim, side mirrors  
PRODUCTS: PURPLE POWER, TRANSPORT, D'LIMOKLEEN PLUS, GREASE TERMINATOR
- 7 STICKER REMOVAL**  
AREAS: exterior surfaces  
PRODUCTS: SUPER-O, SUPER SOL, OUST
- 8 DRESS ENGINE COMPARTMENT**  
AREAS: engine compartment  
PRODUCTS: AQUA SHIELD, ENCHANTER ULTIMATE, ULTRA SHIELD, SAFETY SHINE
- 9 EXTERIOR WASH**  
AREAS: exterior surfaces  
PRODUCTS: AUTO WASH, CRAZY SUDZ, AUTO CLEAM, COBRA, T-11, PRESSURE KLEEN, SPEED BEAD
- 10 FALLOUT REMOVAL**  
AREAS: painted surfaces, glass surfaces, wheel rims, trim  
PRODUCTS: KNOCK OUT, PARADE
- 11 ROAD PAINT REMOVAL**  
AREAS: painted surfaces, trim, wheel wells  
PRODUCTS: SUPER SOL, PURPLE POWER, BLACK CARPET DYE
- 12 DRY VEHICLE**  
AREAS: exterior surfaces, door jambs



- 13 SAP REMOVAL**  
AREAS: painted surfaces  
PRODUCTS: SAP REMOVER, PARADE
- 14 CONVERTIBLE ROOF CARE**  
AREAS: cloth or fabric convertible roof  
PRODUCTS: CRYSTAL FOAM
- 15 BADGE AND PINSTRIPE REMOVAL**  
AREAS: exterior surfaces  
PRODUCTS: SUPER-O, SUPER SOL, OUST
- 16 PAINT CORRECTION**  
AREAS: painted surfaces  
PRODUCTS: SUMMIT SUPER COMPOUND, SUMMIT SUPER POLISH, 50/50 ONE STEP, PARADE
- 17 LAMP RESTORATION**  
AREAS: headlamps, taillamps  
PRODUCTS: SUMMIT SUPER COMPOUND, SUMMIT SUPER POLISH, PARADE
- 18 WAX EXTERIOR**  
AREAS: painted surfaces  
PRODUCTS: ROYAL GLAZE, TROPICAL GOLD, BEAD BUILDER
- 19 EXTERIOR GLASS AND MIRROR CLEANING**  
AREAS: windshield glass, door window, rear window, side mirrors  
PRODUCTS: IMAGE, PLUS 40
- 20 CERAMIC WINDSHIELD COATING**  
AREAS: windshield glass
- 21 CERAMIC PAINT COATING**  
AREAS: painted surfaces, headlamps, taillamps  
PRODUCTS: BEAD BUILDER
- 22 UNDERCOATING**  
AREAS: vehicle underside  
PRODUCTS: GATOR SKIN
- 23 DRESS EXTERIOR**  
AREAS: tires, front bumper, rear bumper, mouldings, vinyl top, trim  
PRODUCTS: RECOVER, TOP HAT, REWARD, KWIK SHINE, AQUA SHIELD, ENCHANTER ULTIMATE, ULTRA SHIELD, SAFETY SHINE
- 24 DETAILING AREA CLEAN**  
AREAS: concrete or asphalt floor  
PRODUCTS: CONC-KLEEN

# INTERIOR DETAILING BLUEPRINT

SCAN THE QR CODE TO VIEW THE FULL DETAILING BLUEPRINT



- 1 DUST AND DEBRIS REMOVAL**  
AREAS: interior surfaces
- 2 PET HAIR REMOVAL**  
AREAS: interior carpets, seats
- 3 FLOOR MAT CLEAN**  
AREAS: removable floor mats (rubber or carpet)  
PRODUCTS: PREZYME, COUNTERACT, BIO PLUS, GREASE TERMINATOR, PURPLE POWER, TRANSPORT, D'LIMOKLEEN PLUS, ULTRA KLEEN
- 4 INTERIOR STAINS AND SALT DEPOSIT REMOVAL**  
AREAS: seats, carpets, interior surfaces  
PRODUCTS: PREZYME, COUNTERACT, BIO PLUS
- 5 CARPET CLEAN**  
AREAS: floor, trunk, spare tire compartment  
PRODUCTS: X-TRACT, CRYSTAL FOAM, SUPER-O, GREASE TERMINATOR, PURPLE POWER
- 6 HEADLINER CLEAN**  
AREAS: headliner, visors  
PRODUCTS: CRYSTAL FOAM, SUPER-O



- 7 SEAT CLEAN**  
AREAS: seats, accent features  
PRODUCTS: X-TRACT, CRYSTAL FOAM, DEEP CLEAN, SUPER-O, SUPER SOL, GREASE TERMINATOR, PURPLE POWER
- 8 INTERIOR HARD SURFACE CLEAN**  
AREAS: door panels, console, support handles, steering wheel, foot pedals, air vents, dashboard, door weatherstrip  
PRODUCTS: DEEP CLEAN, SUPER-O, SUPER SOL, GREASE TERMINATOR, PURPLE POWER
- 9 SEAT CONDITION AND PROTECT**  
AREAS: seats, accent features  
PRODUCTS: FABRIC SHIELD, SOFT TOUCH
- 10 INTERIOR HARD SURFACE DRESS AND PROTECT**  
AREAS: door panels, console, air vents, dashboard  
PRODUCTS: SOFT TOUCH, AQUA SHIELD, ENCHANTER ULTIMATE, ULTRA SHIELD, SAFETY SHINE, PARADE
- 11 DYE CARPET AND UPHOLSTERY**  
AREAS: interior carpets, upholstery surfaces  
PRODUCTS: CARPET DYES
- 12 AUTO DEODORIZER**  
AREAS: interior  
PRODUCTS: DEODORIZERS
- 13 INTERIOR GLASS AND MIRROR CLEAN**  
AREAS: windows, rearview mirror, vanity mirrors, sunroof, gauges, electronic screens, piano plastic  
PRODUCTS: IMAGE, PLUS 40



# ACCESSORIES

Accessories are carefully selected to effectively apply and complement Auto Valet™ products. Ranging from compounding and polishing pads to proportioning systems, these chosen accessories are sure to deliver the results you need.

Every accessory is tested and approved of its usefulness in the detailing process.

Check out the resource of Auto Valet™ accessories to complement in product application and overall detailing delivery.

## C10200



### 4" AIR BLOW GUN

The 4" Air Blow Gun works well for removing dust from vents and hard-to-get areas. Use to blow engines dry. Connects to standard air fittings.

## C10120



### BLACK SUPER TWISTER CLEANING GUN

The Black Super Twister Cleaning Gun is ideal for use in environments with limited air supply. Used to apply cleaners for automotive interior cleaning, its flexible suction tube and bottle's shape provides easy cleaning from 360° angles. Assists in cleaning: dashboards, door panels, steering wheel, fabric upholstery, carpet, floor mats, and fine details/hard to reach areas. Also may be used to apply water-based dressings.

#### C10120-A ROTOR KIT REPLACEMENT

Includes the end aluminum tube and rotating mechanization, which disperses the cleaning product from inside the nozzle.

#### C10120-B PICK UP KIT REPLACEMENT

Used to draw product from the cleaning gun jar, to direct and spray from the nozzle.

#### C10120-C TEFLON TUBE KIT REPLACEMENT

The teflon tube connects the Pick Up Replacement (product code: C10120-B) to the Rotor Kit Replacement (product code: C10120-A).

#### C10120-D NOZZLE REPLACEMENT

The nozzle fits and encompasses the aluminum tube that is part of the Rotor Kit Replacement (product code: C10120-A).

#### C10120-E BRUSH NOZZLE REPLACEMENT

An alternative nozzle to the regular Nozzle Replacement (product code: C10120-D) The brush length is 1-inch.

#### C10120-F SWITCH VALVE SET REPLACEMENT

The on and off valve that connects to the Pick Up Kit Replacement (product code: C10120-B) and controls outgoing liquid from the jar.

#### C10120-G TRIGGER SPRING KIT REPLACEMENT

Includes the parts required to support the trigger functionality.

## C50400



### FOAM CLEANING GUN

The Foam Cleaning Gun is the ideal tool to use with dry foam shampoo on upholstery in vehicles, producing high amounts of dense foam for quick and efficient cleaning. The Foam Cleaning Gun is also a great tool when used with diluted vehicle wash soaps, for washing a vehicle.

# FOAM PAD COLOUR CODING



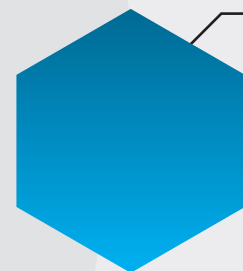
**T120  
GREEN**

Extra heavy cutting foam. Quickly removes deep scratches, over spray, and heavy oxidation; leaving a high gloss finish, when used with SUMMIT SUPER COMPOUND (product code: 814).



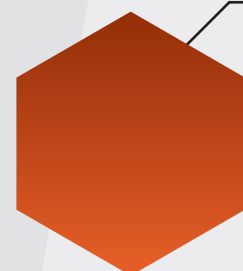
**T80  
YELLOW**

Heavy cutting foam. Removes deep scratches, overspray, severe swirl marks, and heavy oxidation; when used with SUMMIT SUPER COMPOUND (product code: 814).



**T60  
BLUE**

Medium cutting foam. Removes moderate sand scratches, over spray, and surface imperfections; when used with SUMMIT SUPER COMPOUND (product code: 814).



**T40  
ORANGE**

Light cutting foam. Removes minor scratches, and swirl marks while leaving a level smooth surface; when used with either SUMMIT SUPER COMPOUND (product code: 814), SUMMIT SUPER POLISH (product code: 815), or 50/50 ONE STEP (product code: 820).



**T10  
RED**

Polishing foam. Removes ultra-fine swirl marks, car wash scratches, and hazing; leaving swirl-free gloss finish when used with SUMMIT SUPER POLISH (product code: 815) and TROPICAL GOLD (product code: 823).

CUT LEVEL

**B60339**



**T140  
7" KNITTED WOOL PAD SHORT-NAP  
WITH FOAM CUSHION**

The 7" Knitted Wool Pad Short-Nap with foam cushion, is made of 100% knitted ultra-fine wool with nap height of 6mm. Its extra heavy cut is ideal for removing deep scratches, overspray, sanding disc marks, and heavy oxidation. Appropriate for both rotary and dual action equipment.

**B60334**



**T120  
7" GREEN EXTRA HEAVY CUT FOAM PAD**

The 7" Green Extra Heavy Cut Foam Pad, is applicable for both rotary and dual action equipment. Quickly removes deep scratches, over spray, and heavy oxidation; leaving a high gloss finish, when used with SUMMIT SUPER COMPOUND (product code: 814). Wash with warm water after use. Fits the 6" Grip High Flex Backing Plate (product code: B60307).

**B60335**



**T80  
7" YELLOW HEAVY CUT FOAM PAD**

The 7" Yellow Heavy Cut Foam Pad, is applicable for both rotary and dual action equipment. Removes deep scratches, over spray, severe swirl marks, and heavy oxidation; when used with SUMMIT SUPER COMPOUND (product code: 814). Wash with warm water after use. Fits the 6" Grip High Flex Backing Plate (product code: B60307).

**B60336**



**T60  
7" BLUE MEDIUM CUT FOAM PAD**

The 7" Blue Medium Cut Foam Pad, is applicable for both rotary and dual action equipment. Removes moderate sand scratches, over spray, and surface imperfections; when used with SUMMIT SUPER COMPOUND (product code: 814). Wash with warm water after use. Fits the 6" Grip High Flex Backing Plate (product code: B60307).

**B60337**



**T40  
7" ORANGE LIGHT CUT FOAM PAD**

The 7" Orange Light Cut Foam Pad, is applicable for both rotary and dual action equipment. Removes minor scratches, and swirl marks while leaving a level and smooth surface; when used with either SUMMIT SUPER COMPOUND (product code: 814), SUMMIT SUPER POLISH (product code: 815), or 50/50 ONE STEP (product code: 820). Wash with warm water after use. Fits the 6" Grip High Flex Backing Plate (product code: B60307).

**B60338**



**T10  
7" RED POLISHING FOAM PAD**

The 7" Red Polishing Foam Pad, is applicable for both rotary and dual action equipment. Removes ultra-fine swirl marks, car wash scratches, and hazing; leaving swirl-free gloss finish when used with SUMMIT SUPER POLISH (product code: 815) and TROPICAL GOLD (product code: 823) finishing wax. Wash with warm water after use. Fits the 6" Grip High Flex Backing Plate (product code: B60307).

**B60340**

**T05**

**7" MICRO-FIBER POLISHING PAD**

The 7" Micro-Fiber Polishing Pad, is made of 100% polyester nano fiber; fibers are 1/10 diameter natural wool fiber. Its fine fibers help eliminate swirls and leave a mirrored glossy finish, when used with SUMMIT SUPER POLISH (product code: 815). Use the micro-fiber pads with a dual action polisher. Fits the 6" Grip High Flex Backing Plate (product code: B60307).



**B60342**

**T80**

**YELLOW HEAVY CUT CONE**

The Yellow Heavy Cut Cone, is appropriate for narrow painted areas and wheel hub cutting. Use cones with a rotary polisher. Wash with warm water after use.



**B60343**

**T10**

**RED POLISHING CONE**

The Red Polishing Cone, is appropriate for narrow painted areas and wheel hub polishing. Use cones with a rotary polisher. Wash with warm water after use.



**B60367**

**COMPOUNDING FOAMED WOOL PAD**

The Compounding Foamed Wool Pad, has a 6" foam and wool pad hook and loop backing; used for heavy cutting and compounding. For use with a high speed polisher. Fits the 6" Grip High Flex Backing Plate (product code: B60307). For best results use with SUMMIT SUPER COMPOUND (product code: 814).



**B60307**

**6" GRIP HIGH FLEX BACKING PLATE**

The 6" Grip High Flex Backing Plate has 5/8" arbor, fitting most high speed polishers. Velcro quick connect system for fast pad change and has flexibility, making it easier to buff along edges and corners. Fits 6" and 7" diameter pads.



**B60306**

**PROFESSIONAL PAD CLEANING TOOL**

The Professional Pad Cleaning Tool is constructed from metal. Use for cleaning wool pads.



**B40104**

**PARTS WASHER BRUSH**

The Parts Washer Brush delivers fine detailing results in demanding degreasing applications; excellent under the hood and for seams, angles and crevices.



**B40201**

**LEATHER AND UPHOLSTERY BRUSH**

The Leather and Upholstery Brush is made of soft horsehair fibres set in a polypropylene block. Works well with DEEP CLEAN (product code: 216) for leather cleaning and reconditioning.



**B40203**

**PET HAIR BRUSH**

The Pet Hair Brush works to collect animal hair from interior surfaces, in vehicles.



**B40205**

**PET HAIR REMOVAL STONE**

The Pet Hair Removal Stone works amazingly and effectively to collect animal hair from interior surfaces, in vehicles.



**POT BRUSHES**

**B40212**

**SHORT HANDLE  
SOFT BRISTLE**

The Short Handle Soft Bristle Pot Brush has soft nylon bristles, making it ideal for upholstery cleaning and wheel detailing. Features a 9" handle and 2" bristles. Heat and acid resistant.



**B40213**

**SHORT HANDLE  
STIFF BRISTLE**

The Short Handle Stiff Bristle Pot Brush has stiff polypropylene bristles that are ideal for cleaning carpet. Features a 9" handle and 2" bristles.



**B40214**

**LONG HANDLE  
STIFF BRISTLE**

The Long Handle Stiff Bristle Pot Brush has stiff polypropylene bristles that are ideal for cleaning carpet. Features a 16" handle and 2" bristles.



**B40217**

**LONG HANDLE  
SOFT BRISTLE**

The Long Handle Soft Bristle Pot Brush has soft nylon bristles, making it ideal for upholstery cleaning and wheel detailing. Features a 16" handle and 2" bristles. Heat and acid resistant.



**B40215**



**8" DETAIL BRUSH**

The 8" *Detail Brush* has heavy-duty nylon bristles inset on an angle to provide maximum cleaning power. Offset handle eliminates knuckle scrapes, while making it easy to clean between narrow spaces, such as strips of carpet between seats and door thresholds.

**B40301**



**DUAL END DETAIL BRUSH**

Made with stiff nylon bristles, the *Dual End Detail Brush* is a toothbrush styled tool, which is ideal for detailing in small crevices. Also recommended for foam pad cleaning.

**B40302**



**5" ROUND DUST BRUSH**

The 5" *Round Dust Brush* has soft bristles, that are useful for interior detailing, such as removing dust from A/C vents.

**B40303**



**DETAIL BRUSH  
PAINT BRUSH STYLE**

Made with single thickness bristles, the *Detail Brush* is ideal for tight spaces, moldings and seams. 3/4" trim.

**B40312**



**CAR DUSTER**

The *Car Duster* easily removes dust, and is intended for exterior large surfaces. 23" handle and 15" head.

**STEEL WOOL**

Use for removing wax crayon from glass, and cleaning unpainted metal surfaces. 16 pads per sleeve.



**B60101  
#0000**

Premium grade, super fine steel wool.



**B60102  
#000**

Premium grade, extra fine steel wool.

**B60111**



**PLASTIC RAZOR BLADES**

Ideal for delicate surfaces, the *Plastic Razor Blades* work well to remove pin striping from painted surfaces. Fit standard holder. 100 per box.

**B60112**



**SINGLE EDGED RAZOR HD BLADES #12**

*Single Edged Razor HD Blades #12*, are single precision edge blades, that fit all standard holders. 100 per box.

**B60113**



**PLASTIC RAZOR BLADE HOLDER**

The *Plastic Razor Blade Holder* is made from sturdy plastic, that does not rust. Retracts blade for safety.

**B60201**



**TERRY WAX APPLICATOR  
3"X 5"**

Made from fine terry material, the *Terry Wax Applicator* is used to apply both waxes and finishes. 3" x 5".

**B60204**



**MICROFIBER WAX APPLICATOR  
3"X 5"**

Made from microfiber material, the *Microfiber Wax Applicator* is used to apply both waxes and finishes. 3" x 5".

**B60408**



**PINSTRIPES REMOVER**

The *Pinstripe Remover* is designed to quickly remove vehicle pinstripes, adhesives, and double sided tape, while protecting the paint from damage. Pad dimensions: 4" diameter x 1" thickness x 5/16"-24 thread size (1/4" drill adaptor included).

## TRIGGER SPRAYERS

Varying product formulations and product types, require different trigger sprayers to be applied effectively; providing the adequate output stroke and lasting usage. Trigger sprayers are made from various materials (for example, plastic versus rubber parts), based on the products designed to be used with that trigger sprayer.

Trigger sprayers have an output of 1.4 mL/0.05 oz per stroke. The design features a longer trigger, compared to traditional trigger sprayers, that increases leverage and comfortably fits into the hand.

### FOR ALKALINE, NEUTRAL, WATER-BASED PRODUCTS



**B10101**  
**BLUE AND WHITE TRIGGER SPRAYER**



**B10103**  
**RED AND WHITE TRIGGER SPRAYER**

**USE WITH:**

- Aqua Shield
- Bead Builder
- Crystal Foam
- Deep Clean
- D'Limokleen Plus
- Enchanter Ultimate
- Grease Terminator
- Image
- Parade
- Prezyme
- Purple Power
- Safety Shine

- Transport
- Ultra Kleen
- Ultra Shield

### FOR PETROLEUM-BASED, SOLVENT PRODUCTS



**B10104**  
**GREY TRIGGER SPRAYER**

**USE WITH:**

- Cherry Deodorizer
- Fabric Shield
- Green Apple Deodorizer
- New Car Deodorizer
- Oust
- Piña Colada Deodorizer
- Recover

- Reward
- Spring Fresh Deodorizer
- Super Sol
- Super-O
- Top Hat

### FOR ACIDIC, WATER-BASED PRODUCTS



**B10102**  
**GOLD AND BLACK TRIGGER SPRAYER**

**USE WITH:**

- Brilliant
- Counteract
- Flame

- Knock Out
- Rim Cleaner
- Vanish

## SPRAYER TOWER BOTTLES

1 L, HEAVY DUTY

The sprayer tower bottles are made with thicker walls compared to other, standard sprayer bottles and are constructed of a high-density polyethylene for peak durability, with a 28/400 neck finish to fit with a trigger sprayer of choice.



**B10108**  
**SPRAYER TOWER BOTTLE**

A perfect fit for the workplace labels.



**B10110**  
**SCREEN PRINTED SPRAYER TOWER BOTTLE**

A customizable tower bottle, designed to accommodate safety requirements. Simply mark the bottle with an indelible marker to reflect the correct WHMIS information. Features printed dilution graduations for easy manual dilution control.

## FAUCETS AND TAPS



**B10300**  
**3/4" TAP WITH AN EXTENDED SPOUT**

The 3/4" Tap with an Extended Spout is made from polyethylene, and is the correct 3/4" IPS size for a standard drum, keg or cube opening. Fits standard threads. Compatible with a variety of chemicals. The extended spout allows for easy filling into the 28/400 neck of 1 L sprayer tower bottles.



**B10301**  
**SWIVEL FAUCET**  
**3/4" THREAD POLYETHYLENE**

The Swivel Faucet is made from polyethylene and tightly seals to 3/4" IPS size for a standard drum, keg or cube opening. The small spout diameter and swivel handle, are ideal for filling the 28/400 neck of 1 L sprayer tower bottles.



**B10302**  
**FLO RITE 3/4" TAP**

The Flo Rite 3/4" Tap is made from polyethylene and is the 3/4" IPS size for a standard drum, keg or cube opening. Fits standard threads. Compatible with a variety of chemicals.

## TRANSFER PUMPS

The transfer pumps are chemical resistant, easy to use, and reliable. Constructed from durable polypropylene and polyethylene, the transfer pumps safely pump acids, alkalis, water-based tire dressings, viscous vehicle wash soaps, and water-based degreasers. Simply transfers liquids and empties all the contents from the container, delivering on both the up and down stroke. Requires the use of only two fingers on the handle to pump. Does not leak. Easy to clean after use. Do not use these pumps with petroleum-based products. To safely pump petroleum-based products, such as solvent-based degreasers and dressings, use the *Metal Solvent Drum Pump* (product code: B10502).



### **B10307** **CUBE AND PAIL TRANSFER PUMP**

Output per stroke is 160 mL/6 oz. Fits cube and pail (both 18.9 L / 5 US gal) container sizes. Maximum depth neck to container bottom is 420 mm/16 1/2 inches. Width of case pipe is 41 mm/1 1/2 inches. Width of spout is 20 mm (fits a 25 mm/1 inch diameter extender hose). Length of spout is 160 mm/6 inches.



### **B10501** **DRUM AND KEG TRANSFER PUMP**

Output per stroke is 400 mL/15 oz. Fits both drum (208.2 L/55 US gal) and keg (56.8 L/15 US gal) container sizes. Maximum depth neck to container bottom is 930 mm/36 inches. Width of case pipe is 41 mm/1 1/2 inches. Width of spout is 20 mm (fits a 25 mm/1 inch diameter extender hose). Length of spout is 160 mm/6 inches.



### **B10502** **METAL SOLVENT DRUM PUMP**

The *Metal Solvent Drum Pump* is safe for discharging petroleum-based products, such as solvent degreasers and dressings. Constructed from heavy-duty stainless steel and Teflon. Output per stroke is 473 mL/16 oz. Fits the drum (208.2 L/55 US gal) container size. Length is approximately 40 inches. Includes a 2-inch bung adapter.

### **B10308**



### **EMPTY 5 GALLON CUBE WITH A CAP**

The *Empty 5 Gallon Cube* is useful for holding prediluted product. Comes with 70mm cap that can accommodate the Auto Valet™ 3/4" faucets.

## WRENCHES



### **B10309** **70MM CAP WRENCH**

The *70mm Cap Wrench*, is made from lightweight plastic, and fits the 5 gallon cube cap. Spark Proof.



### **B10511** **ALUMINUM DRUM WRENCH**

The *Aluminium Drum Wrench* is made from durable, lightweight aluminum and is used as a universal drum wrench. Spark proof.

### **C50100**

## MULTI-PRODUCT DETAILING STATION

The *Multi-Product Detailing Station* promotes a safer working environment and assists in the compliance of the Ministry of Labour requirements. By keeping an organized workspace, products can easily be accessed at the correct dilution ratios, arranged to save time while detailing, and overall prevent costly mistakes in the detailing process.

### **BUILT-IN SHELF**

A shelf, designed for storing the detailing station user manual, is built-in above the proportioner.

### **THREE SIDE SHELVES**

Each shelf holds four (4) sprayer tower bottles - total capacity of twelve (12) bottles.

### **MIDDLE SHELF**

Holds three (3) cubes (18.9 L / 5 US GAL size) of product to dispense into dedicated sprayer bottles.

### **RUST PROTECTION**

Painted with a special powder coating and e-coat finish that provides maximum rust protection.

### **SWIVEL CASTOR WHEELS**

Contains four (4), 3" swivel castor wheels that rotate 360° for easy station mobility. Two (2) castors include locking brakes.

### **BOTTOM SHELF**

Holds three (3) cubes (18.9 L / 5 US GAL size) of concentrated products for use through the proportioners.

### **THREE-PRODUCT PROPORTIONER**

Includes a three-product proportioner to provide consistent product dilutions and enable correct product strength.



**LET'S GET  
ORGANIZED.  
BOOST YOUR  
SAFETY AND  
EFFICIENCY.**

The products shown on the Multi-Product Detailing Station are sold separately.

### **C50105**

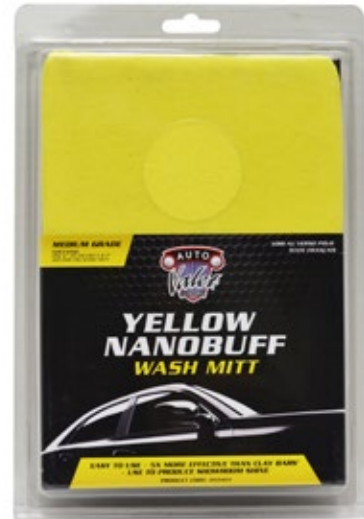
## TRIGGER SPRAYER BOTTLE HOLDER



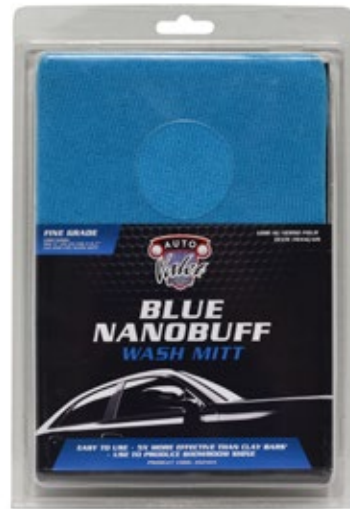
The *Trigger Sprayer Bottle Holder* is capable of fitting four (4) sprayer tower bottles. Constructed of metal, and painted with an e-coat finishing to protect against rust. Fasten to a wall or fixture using screws.

## NANOBUFF WASH MITTS

The nanobuff wash mitts are a professional alternative to clay bars. With advanced rubber polymer technology, it safely and easily removes paint overspray, water spots, rail dust and other bonded surface contaminants from the surface of automotive paint, glass, mouldings and plastic. Clean by simply rinsing off the accumulated contaminants with water, even if dropped onto the ground. Glides easily, allowing for sturdy and controlled handling, unlike clay bars where constant reshaping is required.



**B60403**  
**YELLOW**  
**NANOBUFF**  
**WASH MITT**  
MEDIUM GRADE



**B60404**  
**BLUE**  
**NANOBUFF**  
**WASH MITT**  
FINE GRADE

	DURABILITY, IN USES	WASHABLE	TEMPERATURE SENSITIVITY	USE WITH LUBRICANT	OVERSPRAY	BRAKE DUST	RAIL DUST	INDUSTRIAL POLLUTION	REQUIRES RESHAPING
<b>NANOBUFF WASH MITT</b>	50-80	✓	LOW - MEDIUM	✓	QUICKLY REMOVES	QUICKLY REMOVES	QUICKLY REMOVES	QUICKLY REMOVES	✗
<b>TRADITIONAL CLAY BARS</b>	10-15	✗	MEDIUM - HIGH	✓	SLOWLY REMOVES	SLOWLY REMOVES	SLOWLY REMOVES	SLOWLY REMOVES	✓

## CLAY BARS

Clay bars are a quick and simple way to remove light oxidation, overspray, tree sap, tar, and water spotting from painted surfaces, chrome, fibreglass and aluminum. Simply rub the clay bar over the affected area until clean. Always use with a lubricant on painted surfaces. 227 g/8 oz size.



**R81512**  
**GREY**  
**CLAY BAR**  
REGULAR STRENGTH



**R81514**  
**PURPLE**  
**CLAY BAR**  
AGGRESSIVE STRENGTH



**R81500**  
**CLAY BAR BOX**  
Constructed of plastic.  
Use to hold clay bars.

## MICROFIBERS

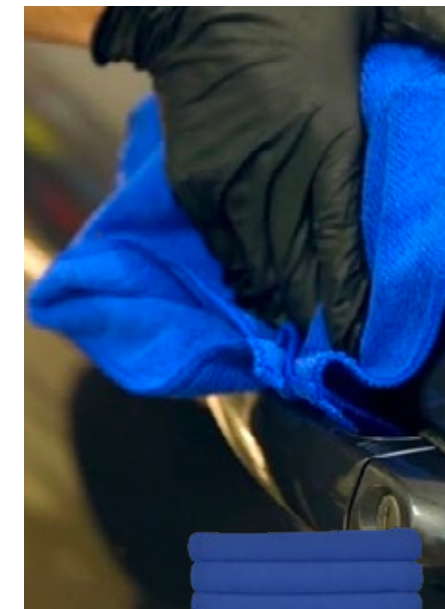
Microfiber towels are scratch free cleaning cloths. Polyester and polyamide (nylon), polymers, are combined to form single threads, within the cloth, creating microfibers' minute structure. Microfibers' fine pores makes them great for penetrating dirt, removing oil and grease and leaving a streak-free drying surface. Durable, can launder up to 500 times. 16"x16". 300 GSM.

### MICROFIBER TOWELS

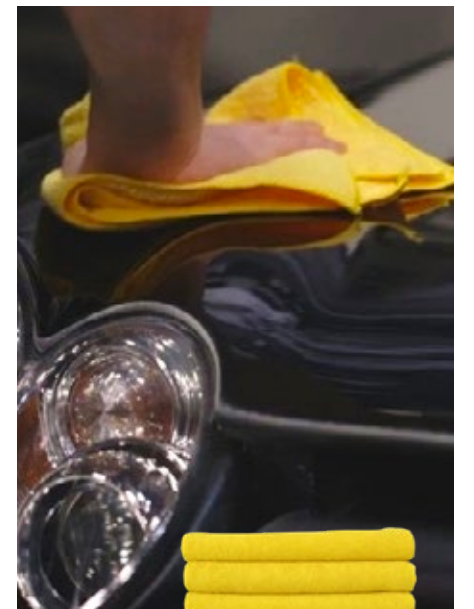
USE ON THE INTERIOR AND EXTERIOR OF VEHICLES



**B20202**  
**GREEN**  
**MICROFIBER**  
**TOWELS**



**B20203**  
**BLUE**  
**MICROFIBER**  
**TOWELS**



**B20204**  
**YELLOW**  
**MICROFIBER**  
**TOWELS**

### MICROFIBER GLASS TOWELS

USE ON WINDOWS, MIRRORS, AND GLASS



**B20207**  
**BLUE MICROFIBER GLASS TOWELS**

**C10619**



**HYDROMASTER #208**

This drum-mount, high-concentration proportioner works for applications where a high flow of product is required to fill tank sprayers, wash buckets, or automatic floor scrubbing machines with a water-based soap or degreaser.

**C10620**



**SINGLE 1 GPM PROPORTIONER**

The *Single 1 GPM Proportioner* is ideal for measuring correct dilution ratios. Constructed from corrosion-resistant materials, this proportioner may be linked with other units to create multiple stations. The 1 GPM flow fills the sprayer tower bottle size.

**C10621**



**SINGLE 3.5 GPM PROPORTIONER**

The *Single 3.5 GPM Proportioner* is ideal for measuring correct dilution ratios. Constructed from corrosion-resistant materials, this proportioner may be linked with other units to create multiple stations. The 3.5 GPM flow is used to fill buckets with wash soap or tank sprayers with degreaser.

**C10623**



**2 X 1 GPM & 1 X 3.5 GPM PROPORTIONER**

The *2 x 1 GPM and 1 x 3.5 GPM Proportioner* is ideal for measuring correct dilution ratios for multiple purposes. This trio-proportioner is designed to dilute all products required in the detailing of a vehicle. Constructed from corrosion-resistant materials. This proportioner may be linked with other units to create multiple stations.

**BRUSHES**



**B20121  
4 1/2" ROUND WHEEL BRUSH**

Use the *4 1/2" Round Wheel Brush* to apply tire dressings or degreasers at a high volume. Fits furl on 60" handles.



**B40102  
TIRE WHITEWALL BRUSH  
NYLON BRISTLES**

Made from nylon bristles, staple set into chemical resistant foam plastic block. Use for tires or spot scrubbing on carpets and upholstery.



**B40103  
12" WHEEL SPOKE & GRILL BRUSH**

Use the *12" Wheel Spoke and Grill Brush* for wire wheels and detailing front grills. Made with Tampico fiber twisted in wire on a wood handle, with a hanger on the end.

**APPLICATORS**



**B40111  
SMALL TIRE DRESSING APPLICATOR**

The *Small Tire Dressing Applicator* is made from terry cloth covering, and works well with solvent dressing and rough surfaces. Heavy duty 3"x 5".



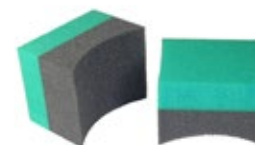
**B40112  
TIRE DRESSING APPLICATOR**

The *Tire Dressing Applicator* has a swivel handle, designed to reduce arm and shoulder fatigue, while dressing tires. Allows for complete dressing coverage without an excessive amount being applied.



**B40113  
REPLACEMENT PADS**

Replacement Pad for *Tire Dressing Applicator* (product code: B40112).



**B40114  
CRESCENT TIRE DRESSING APPLICATOR**

The *Crescent Tire Dressing Applicator* is a sturdy, crescent shaped sponge. Contoured for fast, effective and uniform tire dressing transfer.

**B80101****CHEMICAL SPLASH GOGGLES**

The *Chemical Splash Goggles* are chemical resistant and have an anti-fog lens. Fits over prescription glasses.

**B80201****DENIM APRON**

The *Denim Apron* protects clothing, while completing interior and exterior detailing tasks, and is made with pockets for holding detailing tools and accessories.

**D10503****GENERIC FLOOR MATS**

Floor Mats resist sliding and bunching, and have water resistant coating on face. 500 mats per bundle.

**COVERINGS****D10770  
STEERING WHEEL COVERS**

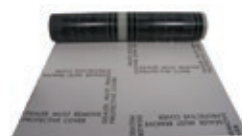
The *Steering Wheel Covers* feature a dual elastic outer rim, ensuring a snug fit on all steering wheels. 250 per box.

**D10771  
PLASTIC SEAT COVERS**

The *Plastic Seat Covers* are designed with polyethylene plastic, and have a 'top pocket', ensuring the cover will not slide off. 500 per roll.

**USE WITH THE PLASTIC SEAT COVERS****D10772  
SEAT COVER DISPENSER**

The *Seat Cover Dispenser* used to dispense the *Plastic Seat Covers* (product code: D10771). Keeps the seat covers from off of floor and work benches.

**D10775  
CARPET ADHESIVE FILM**

The *Carpet Adhesive Film* is a peel and stick carpet protection method. Comes in 24" wide roll.

**USE WITH THE CARPET ADHESIVE FILM****D10776  
CARPET FILM DISPENSER**

The *Carpet Film Dispenser* is used to dispense the *Carpet Adhesive Film* (product code: D10775). Keeps the carpet adhesive film from off of floor and work benches.

**B90101****30" HEAVY DUTY BLACK FLOOR SQUEEGEE**

The *30" Heavy Duty Black Floor Squeegee* is a heavy-duty, all-purpose rubber squeegee, for tough industrial usage. High tearing resistant. Not oil and heat resistant.

**B90104****60" ALUMINUM HANDLE**

Light weight durable handle, with an anodized finish. Fits floor squeegees, such as the *30" Heavy Duty Black Floor Squeegee* (product code: B90101).



## WASH MITTS



**B20101**  
**PROFESSIONAL WASH MITT**

The *Professional Wash Mitt* is a high quality and durable wash mitt. The heavy-duty elastic cuff is serge stitched, and allows for constant usage. Holds soap & water well, yet releases dirt easily. Rinses readily and pile resists clumping.



**B20102**  
**JUMBO WASH MITT**

The *Jumbo Wash Mitt* has a comparable quality to the *Professional Wash Mitt* (product code: B20101), but is a larger size (9 1/2" x 13"). Retains more soap and water, and covering more surface area in less time.

## SPONGES



**B20113**  
**LARGE BUG SPONGE**

The *Large Bug Sponge* is a polyether sponge encased in a durable mesh bag. The mesh on the sponge softens upon contact with water, allowing for bugs and other residue to be removed effectively and safely from glass, chrome and painted surfaces.



**B20114**  
**DO ALL SCRUBBER**

The *Do All Scrubber* is a multi-purpose hard surface sponge, that is ideal for removing bugs and baked-on residue. Allow to soften in warm water before using.

**B20141**



**INDUSTRIAL HOSE NOZZLE**

The *Industrial Hose Nozzle* is made from die-cast zinc, keeping the user's hand insulated from temperatures up to 71°C/160°F. The hold open clip allows for constant rinsing without additional pressure on the handle.

**B20211**



**ONE PASS WATER BLADE**

The *One Pass Water Blade* is made of soft medical-grade silicone and removes 90 percent of water per swipe, making for a shorter drying time. Easy to use.

**B20213**



**MAT CLAMP**

Made from heavy duty aluminum construction, the *Mat Clamp* is designed to be mounted onto a wall.

**B20143**



**18.9 L WASH BUCKET GRATE**

Trapped dirt and contaminants are freed as mitt or brush is rubbed across the surface. Contaminants drop to the bottom of the bucket and are trapped to avoid scratching the vehicle.

**B20142**



**18.9 L WASH BUCKET**

18.9 L White Wash Bucket. Reusable. Recyclable

**B20144**



**BUCKET DOLLY**

Heavy-Duty Bucket Dolly is built to withstand demanding detailing work. The bucket is held securely in place by three thumb screws for reliable, hands-free mobility. It accommodates round 13.2L (3.5 gallon), 18.9L (5 gallon), 22.7L (6 gallon), 26.4L (7 gallon) detailing buckets and supports up to 250 lb.

## WASH BRUSHES



**B20122**  
**ACID RESISTANT VEHICLE WASH BRUSH**

Filling material is staple set in a foam plastic block with a protective bumper. The 10" blocks have one threaded flow-through and one tapered handle hole. Durable and ideal for concrete removal on heavy vehicles.



**B20124**  
**10" GREEN VEHICLE WASH BRUSH**

The *10" Green Vehicle Wash Brush* is made with filling material, staple set into a foam plastic block, with a protective bumper ovetop. 10" green flagged nylon, and has a 2 1/2" trim length. One threaded and one tapered handle hole.



**B20125**  
**BI-LEVEL VEHICLE WASH BRUSH**

The *Bi-level Vehicle Wash Brush* has 10" soft nylon bristles, and is ideal for large vehicles. Works well with flow-through style handles.

## DRYING CLOTHS



**B20200**

### ZORBIT DRYING CLOTH

The Zorbit Drying Cloth is 100% synthetic and is super absorbent. Outperforms regular synthetic chamois, by leaving vehicles dry and spot free. 24" x 30" jumbo size.



**B20201**

### LARGE SYNTHETIC CHAMOIS 27.5" X 20"

The Large Synthetic Chamois cloth absorbs 5-6 times its own weight in water, while resisting oil, grease and mildew. 27.5" x 20" size.

**C10509**



### CHAMOIS WRINGER

The Chamois Wringer quickly removes water from any chamois cloth. Mounts on a drum size (208.2 L / 55 US GAL) and is hand operated.

**B20131**

### 60" WOODEN HANDLE AND METAL FURL

The 60" Wooden Handle comes with a metal furl for stability and durability. Long-lasting and economical.

**B20132**

### YELLOW FIBERGLASS HANDLE

The Yellow Fiberglass Handle works well for applications where the brush remains in wash bucket, as it will not rot or break at threads and is resistant to harsh chemicals.

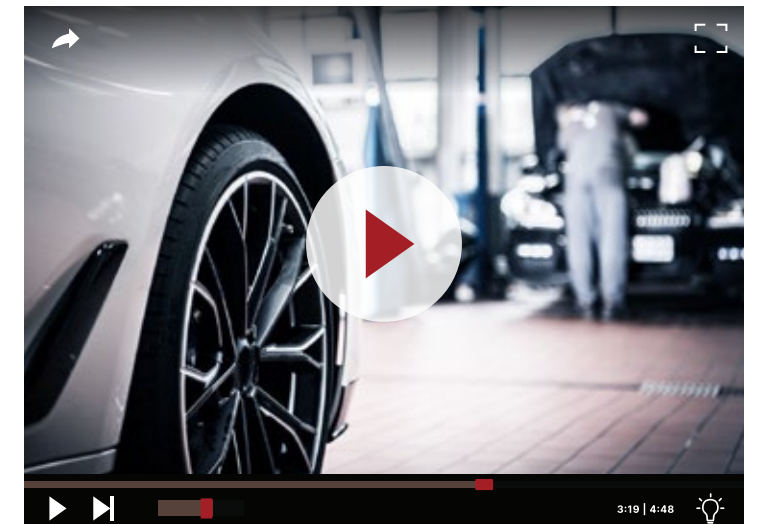
AUTO Valet®

# EXPAND YOUR EXPERTISE WITH THE AUTO VALET™ DETAILER TRAINING SERIES

Enhance your detailing performance by learning the stages and techniques to professionally detail a vehicle and produce an optimal outcome.

### This course includes:

-  18 video lessons.
-  Online platform.
-  Progress tracking.
-  Access to additional online courses.



Sign up to this complementary course by scanning the QR code below.

Currently only available in English.

**SCAN THE QR CODE TO SIGN UP**





**LEYSONS** 

**MAIN OFFICE**

1366 SANDHILL DR.  
ANCASTER, ON, L9G 4V5  
CANADA

**WAREHOUSE**

1404 CORMORANT RD. UNIT 8  
ANCASTER, ON, L9G 4V5  
CANADA

*Toll Free: (800) 539-7667*

*Phone: (905) 648-7832*

*Email: [info@leysons.ca](mailto:info@leysons.ca)*

Auto Valet is a registered trademark.

© 2026 Leysons Products.

AVC.042026